

# WILLOW WEEKEND 2012

June 1 – 3, 2012

Entiat Grange, 14108 Kinsel St., Entiat, Washington

Don't miss this unique opportunity to explore the wide range of techniques that are willow basketry.

*“For the new weaver or skilled basket maker, willow is a multifaceted wonder that you can grow or collect, combine and refine. It can be traditional or contemporary, become bold and large, or quiet and tiny. With an assortment of offerings, you can choose your project and surround yourself for days in the possibilities. A most satisfying addition - - along with your class basket, you will also take home skills to apply to many natural gatherings.” - Judy Zugish*

Three distinguished willow instructors, each specializing in her own aspect of willow weaving, are gathering in north central Washington for a weekend filled with presentations and workshops.

## Jo Campbell-Amsler

Jo's background in Horticulture and Design led her to a career in Willow Rib-Style Basketry. She has specialized in this media since 1981 and works from her home in Monticello, Iowa. Teaching throughout the United States, she shares her knowledge of willow and creating basket shapes. While her baskets are functional, she is non-traditional in her approach to using objects from nature in her work and likes to push the willow to form some sculptural aspects. “The simple construction and clean lines of rib-style or frame basketry techniques give shape, definition and strength to my work...”



Jo Campbell-Amsler  
[www.willowridgebaskets.com](http://www.willowridgebaskets.com)



Katherine Lewis  
[www.dunbargardens.com](http://www.dunbargardens.com)

## Katherine Lewis

Katherine is a willow basketmaker in Mount Vernon, Washington. She works on her farm where she and her husband Steve grow selected varieties of willow allowing her to choose the quality, color, and texture of her weaving materials. An extensive background in traditional European techniques coupled with willow growing has given her the abilities and inspiration to pursue this traditional craft as a full time living. Katherine teaches a limited number of classes each year, spending most of her time at home in her workshop weaving baskets.

## Judy Zugish

Judy began experimenting with garden fibers in 1978. This soon led to an obsession for basketmaking and many years of pursuing technique with notable traditional weavers. Today, her contemporary works using gathered natural materials are exhibited widely. She teaches her signature style at her home in Marysville, Washington and abroad. Studying basketry on trips to many countries has deepened a profound respect for the timeless content in basketry. “My work is primarily about exploring the shapes and layers of materials, using a wide mix of barks, vines and natural gatherings. I like to peel and extract their elements - - to find and expose the character within.”



Judy Zugish  
[www.twigtwisters.com](http://www.twigtwisters.com)

**Bring the family and enjoy a fun weekend in the sun!** Located at the confluence of the Columbia and Entiat Rivers, between the vineyards of Lake Chelan to the north and the fruit orchards of Wenatchee to the south, Entiat is known as *‘the gateway to recreation’*. Locally there is camping at Entiat Park and also in the Wenatchee National Forest twenty-six miles up Entiat River Road. There are several hotels located in Lake Chelan and Wenatchee, both only twenty miles away.

## About Entiat....

“The Entiat area offers an exciting array of recreational activities, including waster sports, hiking, biking, birding, hunting, fishing, off-road cycling and lots of outdoor fun in the sunshine! Camping for RVs and tents is available at Entiat City Park, located on the shores of Lake Entiat. The park includes a boat launch facility and separate dock area, restrooms and showers, picnic shelter, grassy playfield, and beach. Several additional camping facilities are available up the Entiat River Road.” – [www.entiat.org](http://www.entiat.org)

## Friday Evening, 7-8:30pm - Presentation Three Willow Women and Their Work

Join us at **7PM** for a presentation on different styles and techniques of willow basketry. All three instructors will illustrate and discuss their methods of working with willow. There will be opportunities to ask questions and learn all you want to know about this endless subject. **This free event is Open to the Public.**

## Saturday Workshops, 8:30am – 5pm

### Gathering Pouch with Jo Campbell-Amsler

Class Level: **Intermediate**, 12 students max.

Dimensions: 8”H x 7”W

Workshop Fee: \$50.00 Materials Fee: \$65.00



**SORRY, THIS WORKSHOP IS FULL**

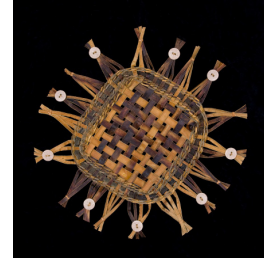
A variety of natural colored materials – willow, palm inflorescence, and daylily/Siberian iris leaves will be used to create this rib-style, pouch shaped basket. Cordage will be made of the daylily/Siberian iris leaves and woven into the pouch to create a nice blend of textural surfaces along with the other materials. Finishing touches of a corded leather strap and willow beads will be added to the completed pouch. Much emphasis will be placed on shaping and placement of ribs.

### Serving Plait with Judy Zugish

Class Level: **All Levels**, 12 students max.

Dimensions: 16” Diameter

Workshop Fee: \$50.00 Materials Fee: \$75.00



A new and simple serving piece inspired by my recent visit to Denmark, where lovely fruits and cheeses and breads came to table on these basketmakers plates! I’m developing a series for small dinner parties that double as hanging artworks when not in use. An excellent intro for all levels to learn about willow groves and harvest, plaiting to purpose, twining and refining. A “plait” to use with grace upon your table.

## Sunday Workshops, 8:30am – 5pm

### Willow Skins Waltz with Judy Zugish

Class Level: **Intermediate**, 12 students max.

Dimensions: 4” Diameter x 12”H

Workshop Fee: \$50.00 Materials Fee: \$85.00



Get a fabulous intro to naturals as two favorites partner up, swirling in rhythm. The lead is provided in cedar, and finely cut willow skins twill and chase in a twirling embrace that rises gently thru a graceful pattern of steps. Finish with a lashed down root rim to reinforce the dance with a final “ta-da”! A satisfying basket with multiple moods for intermediates who love to explore the nature in bark weaving.

### Willow Ridge Herb Basket with Jo Campbell-Amsler

Class Level: **All Levels**, 12 students max.

Dimensions: 15”L x 10”W x 10”H

Workshop Fee: \$50.00 Materials Fee: \$67.00



**SORRY, THIS WORKSHOP IS FULL**

Construct a garden herb gathering basket using three hoops, willow and traditional rib-style techniques. This basket is made very differently from most rib-style baskets, so it will add a new dimension to your weaving skills. Once completed, you will have a beautiful functional basket that is one of Jo’s favorites.

## Saturday and Sunday Workshop, 8:30am – 5pm

### Round Gathering or Oval Garden Basket with Katherine Lewis

Class Level: **All Levels**, 10 students max.

Dimensions: Round Basket: 14” Diameter x 8”H (14”H w/ handle) Oval Basket: 20”L x 13”W x 6”H (13”H w/ handle)

Workshop Fee: \$100.00 Materials Fee: Round Basket: \$65.00 Oval Basket \$85.00



Students will choose between the round gathering basket and oval garden basket. The round gathering basket is a good project for beginners to willow. Both baskets start with a twined base (twining and chase weave for the oval), then you will stake up the sides and begin the weave with a sturdy base wale. Different side weave options will be shown. Both baskets are completed with a cross handle for carrying.

**SORRY, THIS WORKSHOP IS FULL**



# Willow Weekend 2012 Workshop Registration

Entiat Grange

14108 Kinsel Street, Entiat, Washington 98822

Saturday and Sunday, June 2 – 3, 2012 8:30am – 5:00pm

Make plans now to join us for **Willow Weekend 2012** in Entiat, WA! There's a lot to do in the area, so bring your family and friends, and enjoy a fun weekend in the sun! This event is open to NWBW Guild members and to the general public. There will be a presentation (free to the public) on Friday evening and workshops on Saturday and Sunday. **Guild member priority registration is open through January 20, 2012. Beginning January 21, 2012, registration will be open to the general public.** Workshops will be filled on a first come, first served basis. **Please give us your first and second choice, and include \$50.00 per day for workshop fees. Materials fees will be due by May 10, 2012,** after you have received your workshop confirmations. To guarantee your place and that we meet our class minimums for your workshop, please sign up by **April 1, 2012** using this form. Workshop confirmations will be sent via email by **April 20, 2012**. If you wish to receive your workshop confirmation by mail, please enclose a SASE with your registration.

**CANCELLATION POLICY:** *Your workshop fee, materials fee and any lunch fee, less a \$5.00 administration fee, will be refunded provided that the registrar receives notification by telephone by **May 10, 2012**, followed up in writing.*

*From **May 11, 2012** on:*

*For **cancellations**, 1) the same fees will be retained as above, 2) the original materials fee for each workshop will be retained by the instructor, and 3) if the workshop size drops below the minimum of 6 students, the original workshop fee will not be refunded.*

*To **change** a workshop, conditions 2 and 3 apply, plus the student will pay any additional workshop fee and materials fee.*

*No refunds without notification by telephone followed by writing.*

Morning and afternoon snacks will be provided as well as coffee, tea and bottled water. There will be a half-hour lunch break at 12:30pm. You may bring your own lunch or pre-pay for lunch (optional). Refrigerator is available.

A list of tools you will need to bring with you will be sent with your workshop confirmation. Instructors will have some tools available for student use during workshops.

**Got Questions?** Contact Claudia Mullek at 509-784-1877 or [willow2012@nwbasketweavers.org](mailto:willow2012@nwbasketweavers.org)

## YES! Sign me up for WILLOW WEEKEND 2012!

Name: \_\_\_\_\_

Address: \_\_\_\_\_

Phone: Day: \_\_\_\_\_ Evening: \_\_\_\_\_

Email: \_\_\_\_\_

### WORKSHOPS: Saturday:

First Choice: \_\_\_\_\_ Second Choice: \_\_\_\_\_

### WORKSHOPS: Sunday:

First Choice: \_\_\_\_\_ Second Choice: \_\_\_\_\_

**Note:** If you are signing up for *Katherine Lewis'* workshop, please be sure to indicate it on both days and enclose a \$100.00 workshop fee.

Workshop Fee: \_\_\_\_\_

\$10.00 per day Lunch (optional): \_\_\_\_\_

TOTAL ENCLOSED: \_\_\_\_\_

\_\_\_\_ Yes, I am a NWBW member

\_\_\_\_ No, I am not a NWBW member

Checks should be made payable to Northwest Basket Weavers. Fill out and mail by: **April 1, 2012** to: NWBW Willow Weekend 2012, c/o Claudia Mullek, 4942 Deppner Dr., Entiat, Washington 98822

*If you wish to have your workshop confirmations mailed, please include a SASE.*